



# Team Survey Cuts Processing Time by up to 50% and Increases Project Earnings by up to 10% with HxDR Reality Cloud Studio

Salvatore Russo, Director of Team Survey, shared:

“We are extremely satisfied with HxDR Reality Cloud Studio. Throughout the entire process, we received exceptional support and clear guidance on the platform’s capabilities, value, and its role in maximizing the ROI of our scanned data.”



## Challenges:

- **Clients were dependent on outdated 2D drawings and static 360 images**, limiting scanned data visibility and analysis
- **Data was trapped in siloed on-premises storage and disconnected file systems**, with no centralized platform for sharing and collaboration
- **Maintaining costly on-premises servers and high-performance workstations** required ongoing investment and upkeep, limiting the team's ability to focus on higher-value initiatives
- **Lack of a well-defined post-processing workflow**, restricting collaboration and slowing project delivery
- **Requiring customers to install additional software** just to view the point clouds added friction to the process and slowed down overall project delivery
- **Highlight the impact of immersive 3D models** to expand client adoption across use cases

## Solution:

- **Replaced siloed on-premises storage and disconnected file systems** for a centralized cloud-based platform, enabling efficient data storage and sharing
- **Evolved from outdated 2D drawings and static 360 images to fully immersive 3D models**, enabling more accurate project analysis
- **Enabled browser-based sharing through intuitive, shareable links**, giving clients and stakeholders immediate access to 3D project data
- **Streamlined collaboration across stakeholders, subcontractors, and clients**, supporting more agile and enhanced project delivery
- **Launched a centralized data archiving and sharing service**, driving broader client adoption of modern 3D workflows

## Value:

- **Reduced point cloud and mesh processing time by at least 50%**, with mesh processing completed in just one click
- **Increased project earnings by up to 10%** by offering data storage in HxDR Reality Cloud Studio as a value-added service, giving clients ongoing access to their project data along with visualization, collaboration, and delivery tools
- **Improved workflows converting point cloud data into 3D mesh models**, reducing manual effort and faster decision-making
- **Expanded centralized data archiving and sharing services** across clients in both public and private sectors
- **Integrated smoothly with existing Leica products including Cyclone 3DR and AutoCAD, and CloudWorx**, complementing Team Survey's established workflows
- **Received exceptional support during the sales process, onboarding, and post-sale phases**, reinforcing a trusted partnership with Hexagon





## The Client

Team Survey is a trusted surveying firm with over 20 years of technical expertise, serving both public and private sector clients. Specializing in topographic surveying, the company delivers fast and reliable access to digital twins for every project, improving data availability and strengthening client collaboration.

Renowned for precision and efficiency, Team Survey brings advanced capabilities in drone photogrammetry, 3D laser scanning, and land analysis. Their team of skilled professionals produce high-accuracy topographic surveys, 3D models, and as-built documentation to support all phases of the design and construction lifecycle.

Team Survey delivers high-quality spatial data to engineering firms, construction companies, and public agencies, helping them make informed decisions with confidence.

## Challenges

Team Survey faced challenges in expanding the adoption of 3D surveying methodologies, as many clients remained reliant on outdated 2D drawings and static 360-degree images. This limited their ability to gain deeper visibility, perform advanced analysis, and extract meaningful insights from survey data.

Internally, Team Survey's data was siloed in limited on-premises storage and spread across fragmented file systems, with no centralized cloud platform to enable

efficient data management or collaboration. Maintaining local servers and high-end workstations required ongoing investment, adding operational complexity and cost. Project files were shared manually using shipped USB drives, causing delays and exposing the data to errors and security risks.

With few options for efficiently managing and sharing 3D data, the team struggled to maximize the value and return on investment of their captured survey data. The absence of a standardized post-processing workflow further slowed collaboration and project delivery timelines.

Despite using advanced technologies such as the Leica RTC360, drones, and GNSS systems to capture rich 3D datasets, clients were often required to install specialized software just to view point cloud datasets. This added unnecessary friction and slowed down review cycles.

Team Survey recognized the urgent need to modernize their digital archiving and delivery workflows. Their goal was to drive broader adoption of 3D survey data by demonstrating that immersive models could offer far greater long-term value than traditional vector restitutions and standard 2D deliverables.

## Solution

Team Survey recognized the need to modernize their digital archiving strategy and move beyond traditional methods. To address growing challenges, they focused on enhancing stakeholder collaboration and leveraging immersive 3D modeling to strengthen client engagement.

With HxDR Reality Cloud Studio, the team can now generate fully immersive 3D models, eliminating reliance on outdated 2D drawings and static 360° images. Team Survey can now share browser-based links with clients, stakeholders, and subcontractors, making it simple for all parties to access and engage with project data in real time. This improved accessibility has strengthened collaboration, allowing stakeholders to easily navigate the data, perform deeper analysis, and make more informed decisions. Clients have quickly recognized the value of the new workflow, leading to greater adoption of modern 3D delivery formats.

This transition allowed Team Survey to replace fragmented storage with a centralized cloud native platform for efficient data management. With HxDR Reality Cloud Studio, they can transform point cloud data into detailed 3D mesh models, enabling accurate measurements and precise project analysis. All data is standardized and organized within a single platform, ensuring consistency and easy access.

## Value

HxDR Reality Cloud Studio has transformed Team Survey's approach to point cloud and mesh processing, reducing processing time by more than 50 percent. Tasks that once required multiple manual steps are now completed with a single click. Its intuitive interface and one-click mesh generation simplify complex workflows, accelerate project timelines, and make onboarding faster and easier for both internal teams and external collaborators.

By offering data storage in HxDR Reality Cloud Studio as a value-added service, Team Survey provides clients with ongoing access to their project data along with powerful visualization, collaboration, and delivery tools. This has not only increased customer satisfaction but also contributed to a 10 percent boost in earnings per project.

A trusted Hexagon customer for nearly 20 years, Team Survey values the platform's reliable integration with their broader technology stack. The team particularly appreciates how HxDR Reality Cloud Studio works seamlessly with Leica

Cyclone 3DR, CloudWorx, and AutoCAD, enhancing existing workflows and improving operational efficiency.

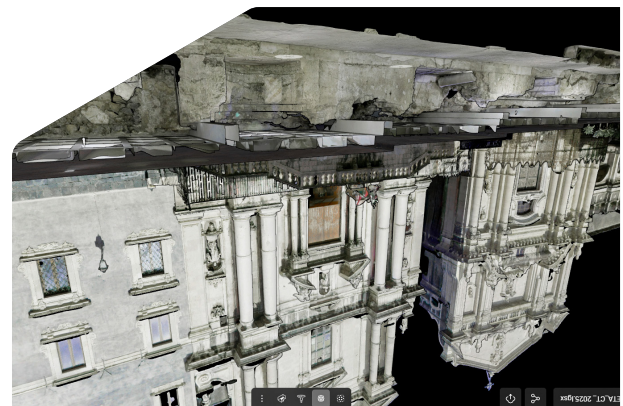
Supporting a wide range of data formats, the platform plays a central role in expanding Team Survey's digital archiving and sharing services for clients across both public and private sectors.

The team also highlighted the exceptional support received throughout the entire process, from initial engagement through onboarding and ongoing use. Salvatore Russo, Director of Surveying, shared,



“ Everything is visible in the same space, and that's a big help for our clients. They're not jumping between platforms or managing massive files on their own servers. They can simply access what they need and start working.”

Looking ahead, Team Survey plans to expand its use of HxDR Reality Cloud Studio, confident in the platform's ability to continue delivering long-term value through ongoing innovation.



portico dell'atleta Catania – Historical landmark in Catania, Italy

Hexagon is the global leader in measurement technologies. We provide the confidence that vital industries rely on to build, navigate, and innovate. From microns to Mars, our solutions ensure productivity, quality, safety, and sustainability in everything from manufacturing and construction to mining and autonomous systems.

Hexagon (Nasdaq Stockholm: HEXA B) has approximately 24,800 employees in 50 countries and net sales of approximately 5.4bn EUR.

Learn more at [hexagon.com](https://www.hexagon.com)